

May 14, 2026
Sompo Holdings, Inc.
Sompo Japan Insurance Inc.

Strategic Partnership Agreement with DRS Group ~Co-creation of a Rapid Vehicle Repair Platform for Hail Disasters Utilizing World-Class Technology~

Sompo Japan Insurance Inc. (President and Chief Executive Officer: Koji Ishikawa, hereinafter "Sompo Japan"), a subsidiary of Sompo Holdings, Inc. (Group Chief Executive Officer, Director, President and Representative Executive Officer: Mikio Okumura), has concluded a strategic partnership agreement with DRS Group (Japanese Subsidiary: DRS Automotive Solutions Japan Co., Ltd., hereinafter "DRS"), a global leader in Paintless Dent Repair (PDR) technology*1, to establish a rapid and environmentally friendly vehicle repair system for hail disasters in Japan.

*1 A technology that uses specialized tools to restore vehicle dents in a short time, reducing environmental impact by avoiding part replacements and repainting.

1. Background and Purpose of the Collaboration

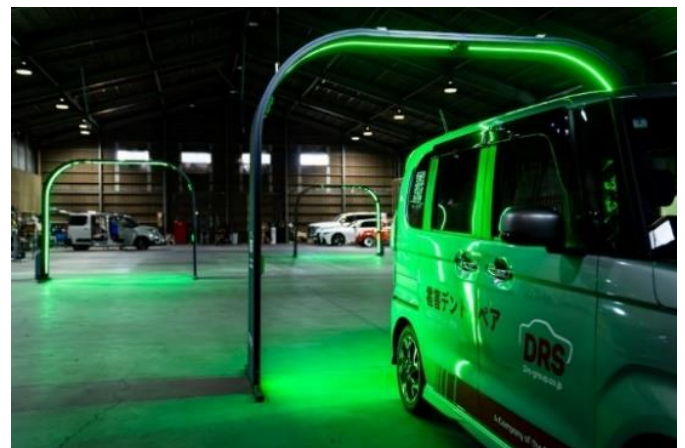
In recent years, the impact of climate change has led to increasingly severe and frequent "hail disasters" in Japan. Consequently, prolonged repair waiting times exceeding one year, loss of vehicle value due to extensive part replacements, depletion of replacement parts, and high environmental impact from numerous scrapped vehicles and parts as well as the use of paints have become major social issues.

DRS boasts world-class PDR technology for repairing dents without sheet metal painting. With a global network of highly skilled technicians and world-class AI scanners capable of scanning an entire vehicle in 30 seconds to identify damage, the company holds the world record for large-scale hail disaster repair, having previously repaired over 40,000 vehicles in just 13 weeks.

By integrating this technology with Sompo Japan's top-tier domestic non-life insurance business foundation, risk solution services, and digital technology, we aim to co-create a nationwide vehicle repair platform for hail disasters that will serve as sustainable social infrastructure, thereby solving these social issues.

This initiative is also part of Sompo Japan's "HIKESHI DNA 2030 Project"*2, aiming for a new form of insurance company that "protects" customers by not only "delivering insurance claims promptly" but also "supporting them until the vehicle's restoration is complete."

*2 A Sompo Japan project that strengthens initiative in disaster prevention and mitigation in order to realize resilient communities where everyone can live with peace of mind.



2. Specific Initiatives Realized Through the Collaboration

- **Rapid Initial Response Utilizing Advanced Technology**

Establish initial diagnostic hubs (triage centers) in affected areas within 72 hours of a hail disaster. Using AI scanners, damage will be visualized quickly and accurately, allowing for the prompt presentation of repair reservations and estimated completion times to customers. Air-frame type scanners that can be deployed instantly using air are also scheduled to be introduced within the year. As these scanners can be compressed and carried onto airplanes, we anticipate further acceleration of the initial response.

- **Provision of a Seamless Customer Experience (OMO Journey^{*3})**

We will digitalize the entire process end-to-end, from on-site estimates using AI scanners to the insurance claim process through system integration.

^{*3} A system that integrates online and offline channels to provide a smooth customer experience.

- **Construction of a Hail Disaster Ecosystem**

We will explore the joint development of high-precision "Hail Disaster Prediction & Occurrence Alerts" and the provision of inventory risk management solutions for automobile manufacturers and dealers.

- **Hybrid Technician System and Domestic Training**

In the event of a large-scale disaster, we will establish a system to dispatch skilled technicians from overseas to Japan while actively working on training PDR technicians and expanding the network within Japan.

- **Strengthening Group Collaboration**

With an eye toward collaboration with Sampo Japan group companies such as Sampo Direct and Mysurance, we aim to provide value to a broad range of customers.

3. Future Schedule (Planned)

Joint service provision by both companies will begin in May 2026.

(Reference) Overview of the Partner

- **Company Name:** DRS Group (Japanese Subsidiary: DRS Automotive Solutions Japan Co., Ltd.)
- **Japanese Subsidiary Address:** Zenken Plaza Building, 1-4-11 Nishi-Shinjuku, Shinjuku-ku, Tokyo 160-0023
- **Global Headquarters:** Am Sandtorkai 58, 20457 Hamburg, Germany
- **Business Description:** Repair of hail-damaged vehicles using PDR technology, PDR technology and AI scanner operation training

- End



HIKESHI DNA 2030 Project

「HIKESHI DNA 2030 Project」は、当社の原点である"火消しの精神"を今に受け継ぎ、地域と連携して「災害に強く、だれもが安心して暮らせる地域社会の実現」を目指すプロジェクトです。